

## Safety Instructions

École de la Fourmière

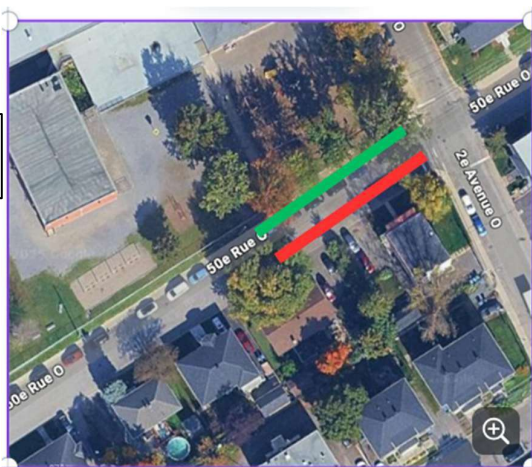
These guidelines aim to ensure safety and smooth traffic flow during students' arrival at school. Please read them carefully and follow them at all times.

Arrival of children registered for the daycare service

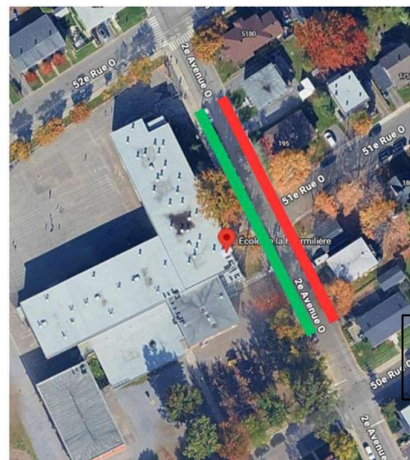
Schedule: 7:00 a.m. to 7:45 a.m.

- Park only in the green zone.
- Encourage students' autonomy (from Grade 3 to Grade 6) by letting them walk to the daycare on their own, so that parking spaces become available quickly. We suggest placing the school bag and lunch box in the car—not in the trunk—before leaving home, so that you do not need to get out of the vehicle.
- Parking in the red zone or using hazard lights ("4 flashers") to allow children to cross is prohibited.
- U-turns are not allowed, in accordance with municipal regulations.
- Whenever possible, avoid parking in nearby streets, as they are used by school staff.

50<sup>e</sup> avenue ouest



2<sup>e</sup> avenue ouest

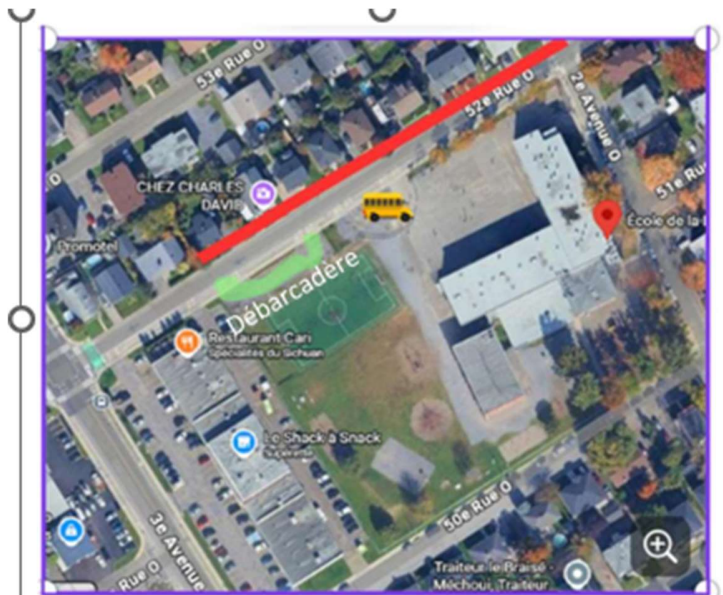


Arrival of children not registered for the daycare service

Schedule: 7:45 a.m. to 7:55 a.m.

- It is strictly forbidden to leave a child alone in the schoolyard before 7:45 a.m.
- Use the drop-off area: let your child get out of the vehicle on their own and go directly to the yard.
- Never park along the red line.

52<sup>e</sup> avenue ouest



### Important Reminder

These instructions are in place to ensure the safety of all students and the proper flow of traffic around the school. Your cooperation is essential and greatly appreciated.

Thank you for your cooperation

The Administration